



MASTER LEDtube EM/ Mains T8

MASTER LEDtube Sensor 1200mm HO 16.5W840 T8

The Philips MASTER LEDtube integrates a LED light source into a traditional fluorescent form factor. Its unique design creates a perfectly uniform visual appearance which cannot be distinguished from traditional fluorescent. For those that are looking for value for money within limited budget and re-lamping efforts for better light effect and lifetime.

Product data

General Information	
Cap-Base	G13 [Medium Bi-Pin Fluorescent]
RoHS mark	RoHS mark
Nominal Lifetime (Nom)	50000 h
Switching Cycle	200000X
B50L70	50000 h
Light Technical	
Color Code	840 [CCT of 4000K]
Beam Angle (Nom)	240 °
Luminous Flux (Nom)	2100 lm
Luminous Flux (Rated) (Nom)	2100 lm
Rated Beam Angle	240 °
Correlated Color Temperature (Nom)	4000 K
Color Consistency	<6
Color Rendering Index (Nom)	83
LLMF At End Of Nominal Lifetime (Nom)	70 %

Operating and Electrical	
Input Frequency	50 to 60 Hz
Power (Nom)	16.5 W
Lamp Current (Max)	85 mA
Lamp Current (Min)	65 mA
Starting Time (Nom)	0.5 s
Warm Up Time to 60% Light (Nom)	0.5 s
Power Factor (Nom)	0.9
Voltage (Nom)	220-240 V
Temperature	
T-Ambient (Max)	45 °C
T-Ambient (Min)	-20 °C
T-Storage (Max)	65 °C
T-Storage (Min)	-40 °C
T-Case Maximum (Nom)	55 °C

MASTER LEDtube EM/Mains T8

Controls and Dimming

Dimmable	Yes
----------	-----

Mechanical and Housing

Bulb Material	Glass
Product Length	1200 mm

Approval and Application

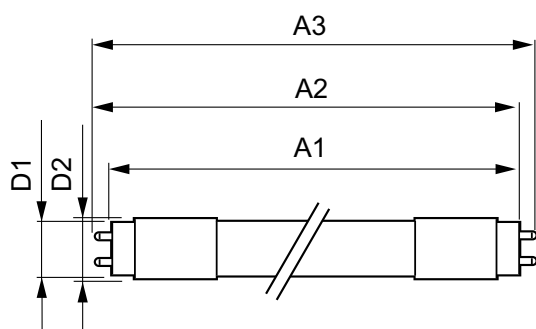
Energy Efficiency Label (EEL)	A++
Energy Saving Product	Yes
Approval Marks	CE marking RoHS compliance KEMA Keur certificate
Energy Consumption kWh/1000 h	17 kWh

Product Data

Full product code	871869680602900
Order product name	MASTER LEDtube Sensor 1200mm HO 16.5W840 T8
EAN/UPC - Product	8718696806029
Order code	929001878502
Numerator - Quantity Per Pack	1
Numerator - Packs per outer box	10
Material Nr. (12NC)	929001878502
Net Weight (Piece)	0.215 kg

Warnings and Safety

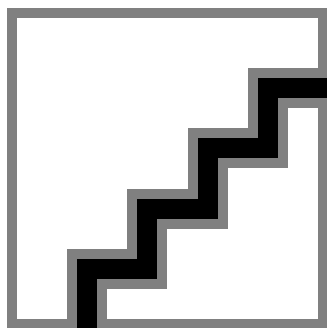
Dimensional drawing



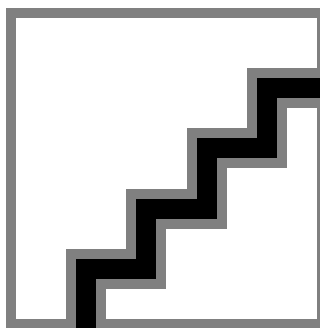
TLED 1200mm 16.5-36W 2100lm 4000K G13 D

Product	D1	D2	A1	A2	A3
MASTER LEDtube Sensor 1200mm HO 16.5W840 T8	25.8 mm	28 mm	1199.4 mm	1206.5 mm	1213.6 mm

Photometric data



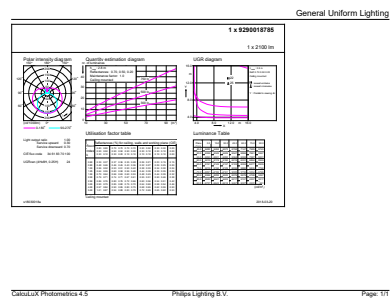
16-5W G13 840 4000K



16-5W G13

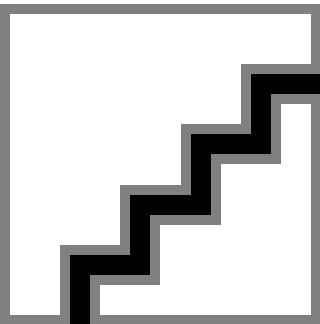
MASTER LEDtube EM/Mains T8

Photometric data

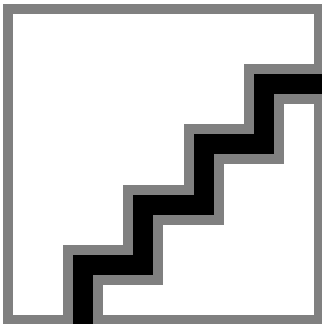


16-5W G13 840 4000K

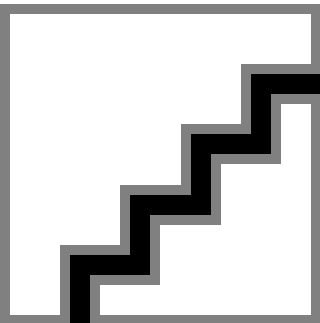
Lifetime



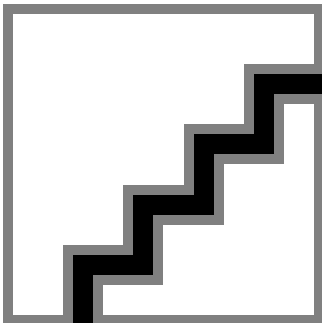
16-5W G13



16-5W G13



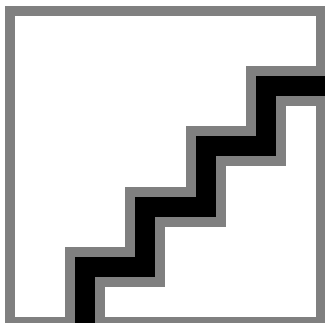
16-5W G13



16-5W G13

MASTER LEDtube EM/Mains T8

Lifetime



16-5W G13

